

# Garrity criticizes busing as Boston tensions rise

BOSTON (AP) — Attendance and tensions have risen perceptibly in Boston's schools while the busing to achieve Phase 2 of integration has come under criticism from the federal judge who ordered it.

U.S. District Court Judge W. Arthur Garrity said Tuesday the transportation

of students throughout the city was sometimes "impossible."

"It was a horror show last week in some places," Garrity said, confirming what some parents had been complaining about since schools opened Sept. 8. "I don't know how (the opening of schools) went as well as it did."

"The ball is now in the school department's court — in the judge's court — to deliver what's been promised in (the desegregation) plan," Garrity said.

A school bus carrying white students from Boston Technical High School was stoned by a group of black youths Tuesday — the third such bus stoning since schools opened. No injuries were reported in any of the incidents.

One black student was hospitalized following a racial fight at South Boston High School. Thirteen other students, eight black and five white, were suspended after incidents — not all of them racial — in five schools Tuesday.

The almost daily antibusing march in the Charlestown section continued Tuesday night. Police said about 300 people, led by many of the women who

took part last week in "mothers' marches" against busing, wound their way through the district.

However, there were none of the confrontations between youths and members of the police department's Tactical Patrol Force that occurred almost nightly last week.

Attendance overall Tuesday rose to 72.3 per cent during the seventh day of classes. The figure was 70 per cent Monday and well above first day attendance of 59.2 per cent. There was a gain in high school attendance, with South Boston High School complex showing 48.3 in attendance — the highest figure so far.

Of the projected enrollment of 76,237, school officials said 55,070 were in classes

Tuesday. Of those attending, 25,577 were white, 22,920 were black and 6,573 other minorities.

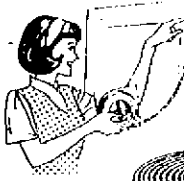
The first day of kindergarten in the Boston system Tuesday showed a 93.3 attendance figure, which helped raise the

overall average.

Charles Leftwich, integration coordinator for the system, said the best sign that integration is working will be "when a fight can be dealt with as a fight and not turned into a major racial incident."

**Mortite**

THE PERFECT WEATHERSTRIPPING



- Looks Like Rope
- Molds Like Clay
- Self Adhering
- Can Be Used Over And Over
- Never Hardens

**ALDO'S** Paint & Wallpaper

101 Main Street

Closed Saturdays at 1 PM

North Adams

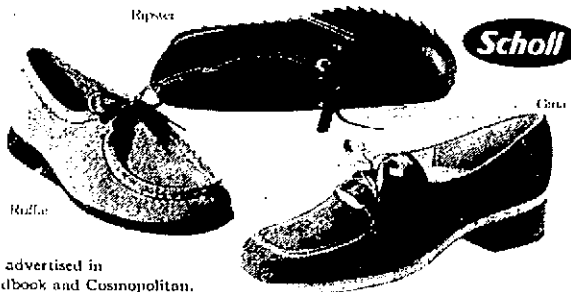


My feet feel terrific.

Big deal? It is to me. Because I'm a model and I'm on my feet a lot. So I wear Scholl's casuals.

I really love their foot-cradling arch, springy soles and super soft leather. Scholl casuals help me make it through my longest days. Just because your feet come at the bottom of your body, doesn't mean they should be the last thing on your mind.

*Wendy Jones*



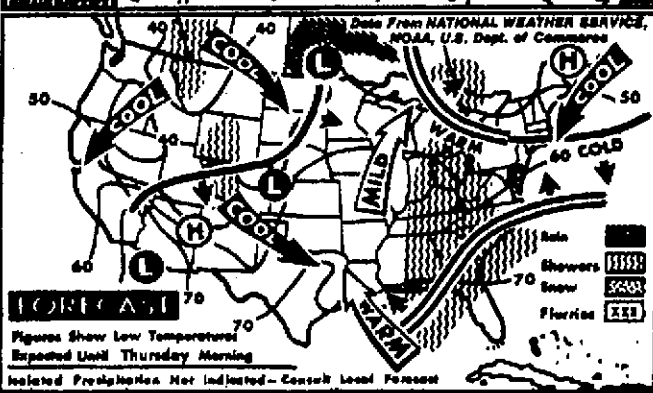
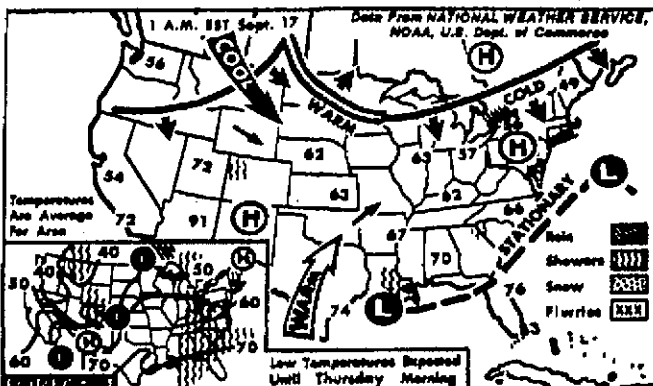
As advertised in Redbook and Cosmopolitan.

**LoPresto's**

Shoe Store

MOHAWK CENTER  
663-5515

25 MARSHALL ST., NORTH ADAMS  
HOURS: Mon.-Sat. 10-5:30, Thurs. 10-9:00



**NATIONAL FORECAST**—Showers expected today over most of the East. Cooler in New England and the West; warmer for most of the East.

**LOCAL FORECAST**—Cloudy tonight and tomorrow with a chance of scattered showers. Low tonight 50-55; high tomorrow 65-70. Chance of precipitation 20 per cent tonight and tomorrow.

**SKIES TODAY:** Sunset today, 7:01 p.m.; sunrise tomorrow, 6:31 a.m.; Moonset tomorrow, 4:50 a.m.; Full Moon, Sept. 20; Perseid Stars, Aldebaran rises, 10:16 p.m.; Regulus rises, 4:34 a.m.; Visible Planets, Jupiter rises, 8:15 p.m.; Mars follows Aldebaran, Venus south of Regulus. Saturn between Venus and Mars.

## Hospital staff protests cutbacks

BOSTON (AP) — State budget cuts are causing severe hardship at public facilities for the mentally ill, according to the staff and patients at Boston State Hospital.

Some 100 persons demonstrated at the State House Tuesday, urging restoration of what was termed arbitrary spending reductions.

## Sale of Daystrom Dinettes Priced During Sept.

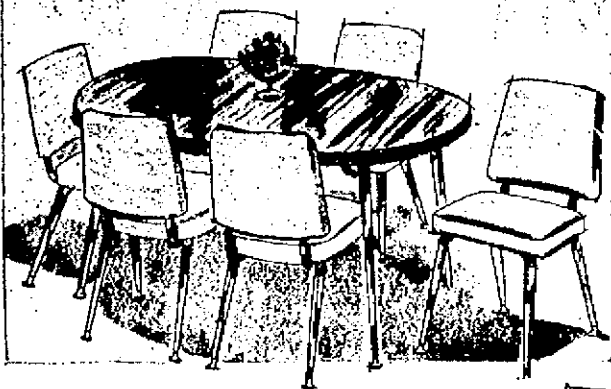


TABLE AND 4 CHAIRS  
**\$129<sup>50</sup>**

Topped with walnut grain plastic, this handsome set comes in a fashionable round style. Care-free vinyl upholstery enhances the smart, comfortable chairs. Green or bronze.



TABLE AND 6 CHAIRS  
**\$169<sup>50</sup>**

Easy Terms

As practical as it is good-looking! With a hint of brass, Table is topped with "worm" wood tone pattern. Fashioned in mar-resistant plastic, the six chairs are stunning in fabric-like vinyl upholstery. Table, rectangular, has ten-inch leaves... extends to 70.

**SPECIAL — 30x40"**  
CHROME TABLE, 4 CHAIRS **\$89<sup>50</sup>**

FREE PARKING REAR OF STORE

"Serving You Since 1902"

**FEDER FURNITURE CO.**

20 Marshall Street

North Adams

Open Thursday 'Til 9

## WESTINGHOUSE REFRIGERATORS FREEZERS

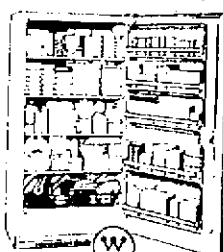
THEY USE LESS ELECTRICITY —  
COST LESS TO OPERATE!



All the details are published for everyone to see — in the April 1975 Special Edition of the AHAM\* Directory of Certified Refrigerators and Freezers. The figures show that in 144 out of 145 comparisons with 16 leading brands, Westinghouse Refrigerators and Freezers use less electricity — cost less to operate!

\*Tests independently verified in accordance with Standard HRF-2 ECT of the Association of Home Appliance Manufacturers.

THIS FREEZER  
COSTS UP TO \$683  
LESS TO OPERATE



Model R112R  
UPRIGHT FREEZER WITH  
BIG 18 CU. FT. CAPACITY!  
• 7-day fresh meat keeper  
• Package guard for bulk storage  
• Five full-width, deep door shelves  
• Infinite position temperature control

COMPARE WESTINGHOUSE OPERATING COST	With Comparable Models of Other Leading Brands	COST MORE THAN WESTINGHOUSE
"S"	\$683	
"MW"	\$660	
"A"	\$648	
"B"	\$256	
"D"	\$284	
"H"	\$384	
"W"	\$683	

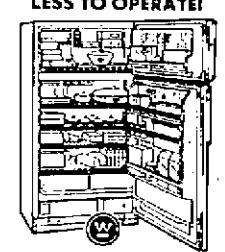
THIS REFRIGERATOR  
COSTS UP TO \$783  
LESS TO OPERATE!



Model R112R  
FROST-FREE 17.2 CU. FT.  
REFRIGERATOR  
• 7-day fresh meat keeper  
• Adjustable cantilever shelves  
• Adjustable glide-out rollers  
• Automatic defroster optional

COMPARE WESTINGHOUSE OPERATING COST	With Comparable Models of Other Leading Brands	COST MORE THAN WESTINGHOUSE
"S"	\$783	
"MW"	\$370	
"A"	\$655	
"B"	\$242	
"D"	\$361	
"H"	\$561	
"W"	\$783	

THIS REFRIGERATOR  
COSTS UP TO \$867  
LESS TO OPERATE!



Model R112R  
FROST-FREE 19.3 CU. FT.  
REFRIGERATOR  
• 7-day fresh meat keeper  
• Adjustable cantilever shelves  
• Adjustable glide-out rollers  
• Automatic defroster optional

COMPARE WESTINGHOUSE OPERATING COST	With Comparable Models of Other Leading Brands	COST MORE THAN WESTINGHOUSE
"S"	\$867	
"MW"	\$556	
"A"	\$326	
"B"	\$256	
"D"	\$341	
"H"	\$541	
"W"	\$867	

\* Certified energy consumption (kWh) of by Association of Home Appliance Manufacturers in accordance with AHAM Standard HRF-2 ECT, April 1975 as stated in feature of models.

With these two figures, the lower operating cost is a 50% cost savings in energy operating.

\* Figures computed on basis of a average 10¢ per kWh cost of electricity.

## HERE ARE 3 REASONS WHY:

**SLIM WALL FOAM INSULATION!**  
Westinghouse uses a special foam type insulation... the most efficient insulating material used in refrigerators. Foam fills every nook and cranny to insulate evenly... won't rot or settle and adds structural strength to the cabinet. As an added benefit, foam insulation gives more storage space in less floor space.

**HI-PERFORMANCE FINE COOL SYSTEM!**  
Improved condenser system provides better heat dissipation for greater operating efficiency. Cooling fan has extra large blades to move more air, but at lower speed for extra quiet operation!

**WESTINGHOUSE "I" COMPRESSOR!**  
The "heart" of the refrigerator! Precision machined parts, computer checked assembly, tamper power and precision to assure an absolute minimum of friction. Parts are completely surrounded by an oil to further reduce friction and wear. This is added up to higher efficiency and longer life for the Westinghouse "I" Compressor.

9-13 Union St.  
Between Dunkin'  
Donuts and  
McDonald's

**GAGLIARDI'S INC.**  
Kitchen & Home Improvement Center  
"SERVICE AFTER SALES"

Dial 663-3746  
Open Thurs.  
'Til 9:00 PM