

# Science Equipment Vaporizes- Is There A Solution?

Campus crime has fast become an issue of deep concern in recent weeks. The thief is among us once again, stealing personal items that have been placed for his/her taking. Over \$50,000 worth of items and equipment have been stolen from many departments on campus.

Of the departments hit by crime, Chemistry has suffered the most. Since the summer: 7 calculators, valued at \$800-\$2400 each; 4 balances (\$2000 each); and 3 electric typewriters (\$500 plus) have been stolen.

Among various causes of theft, the locking system at UMass is controversially inadequate. In the locks of many doors on campus, construction cores are still being used. These cores are red and enable the construction workers to come and go with a single key that fits every door.

In an interview with Leverett Zompa, Chairman of the Chemistry Department, he states, "Many locks in the Science Center still have red cores. This means there are any number of master keys. These keys could be in the hands of anyone."

The administration has taken steps to replace these cores with a new, more secure series. In Colleges I and II these changes have been made. The administration will also replace the stolen equipment, though it will take time and taxpayers' money.

It was also surmised that pros might have committed these crimes. Since every item stolen was fastened down by half-inch bolts, and metal shavings were found in some instances, Mr. Zompa believes drills were brought in. Amateurs would not take the time or those chances. "The calculators were presumably sold to the Black Market." A call from security confirmed that a UMass calculator was found in Little Rock, Arkansas. Mr. Zompa went on, "What is needed here is some sort of deterrent: such as spot checks, increased security, and the lock cores. We have taken steps to deface equipment. Engraved on each item is the department's name and number. This decreases sale

value on the market, thus discouraging thieves. Action must be taken to keep crime under control."

University Chief of Police is John Carpenter. He has just graduated from courses at the FBI Academy in Quantico, Virginia. The Chief was questioned about the recent outbreaks. "By no means is crime getting out of hand; UMass Boston has the lowest crime rate of any school in the Boston area."

The UMB force (brown shirts) is a 30 men and women unit, which includes 12 new Boston Police Academy graduates. The Ogden Security Force (blue shirts) has men on a 24-hour rotational duty.

Chief Carpenter confirmed the half-dozen theft reports received from the departments hit. He said some arrests and prosecutions have been made. He added that three miscellaneous thefts occurred in the garage last week. "Some cars were broken into with coat

hangers, and books and other items were taken." Carpenter agreed with Zompa that deterrent measures should be taken. "We have increased our visibility with more patrols, and two on-duty plainclothesmen." The Chief went on to say, "One of our main concerns is to get people to be more security conscious. We have a booklet that deals with this." Among the suggestions the booklet offers is never to leave wallets and handbags unattended. Desks should be cleared of all valuables, and the door should be locked when leaving. The Chief said that little things like these inhibit thieves from taking something from you.

Vice-Chancellor Hamilton is in charge of security on campus. He, in effect, reiterated what Chief Carpenter said, but added, "The campus police are people who are specially trained, screened, and tested in a variety of ways for these jobs. I'm quite proud of them."

## Women-Be Aware

**SELF-HELP** - what is it? Self Help is women sharing experiences, knowledge and feelings - women supporting each other and learning together. Self-Help begins by working from a practical base starting with learning physical self-examination, finding out what we DO know, what we do NOT know, what we WANT to know and exploring from there.

Self-Help groups are action oriented. One self-help group might investigate menopause, another human sexuality, another lesbian issues, another might train as paramedics and health counselors. The possibilities are endless, depending only on our own creativity and needs.

Self-Help is women relating to ourselves in order health care, the professionals and own bodies; it involves being able to make personal choices based on our own very valid experiences and knowledge. Self-Help is a positive action by which we can change our own lives and those of other women. Self-Help is a political act. It is

deeply challenging to the existing health care system. Through sharing our knowledge collectively we have developed skills - we, not the professionals, will know what is done to us medically and why it is done. We do not take the place of the doctor, but we do reverse the patriarchal-authority-doctor over patient roles. We take women's medicine back into our own hands by taking back control over our own bodies and becoming strong in our self-knowledge.

The Human Sexuality Center is offering a Self-Help and Health Care Workshop for the women here at UMass beginning Friday, October 18 at 1 p.m. It will be given by women from the Comen's Community Health Center, Hampshire St. Cambridge. It is a four week course

3 hrs a session. There will be a charge of \$4.00 for the four week course. If you are interested please stop by the Human Sexuality Center, third floor College II, room 704 or call extension 3226.

## news briefs

The University Police has announced that twelve new officers have graduated from a Police Recruit Training Program. The twelve week course is conducted by the Boston Police Department Division of Training and Education. The Department of Public Safety now has 30 police officers ready to meet the needs of the UMass-Boston campus. The Office of Student Activities has set up a new communications center in room 615 on the third floor of College II. Sherry Thomas, Associate Director of Student Activities, directs the center whose purpose is to inform students and faculty of the times and places of events on campus. A Hot line, ext. 3231 and 3232 is in operation from 9 a.m. to 5 p.m. Monday through Friday.

(CPS) - If you're one of those ecology and convenience conscious persons who pulls the tab off your beverage can and then drops it in your drink, you may be in trouble some day. According to officials of the American College of Radiology (ACR), the accidental swallowing of tabs from beer and soft drink cans is becoming a serious medical problem. Occasionally, drinkers will accidentally swallow the tabs, which will lodge in the gullet or esophagus and require emergency surgery to remove.

In other cases, the tabs may lodge in the stomach, or may pass completely through the body without harm, according to Dr. Byron Brogdon of ACR.

(CPS) - Women who use birth control pills risk significant nutritional and metabolic changes according to a report compiled by students at the University of California at Berkeley. In addition to altering sugar and fat metabolism, the pill affects the body's use of folic acid - several protein components, copper, zinc, and vitamins A, B-6, B-12 and C.

Deficiency of folic acid (a B-vitamin) is associated with a type of anemia. Vitamin B-6 deficiency, reported often, is related to the mental depression some women experience while taking the pill. These

deficiencies may prove particularly harmful to women who go into pregnancy after several years of pill use. Adverse effects may also hit women whose diets are nutritionally poor previous to taking the pill.

(CPS) - The administration of Boston City Hospital is planning to install cash registers in the Outpatient Department. They also want to hold financial interviews with patients before they see a doctor, to find out how they are going to pay. These schemes - not yet approved by the hospital's trustees - are part of an overall attempt to pressure clinic patients into paying patients who most times can't afford to pay. They are two of a growing series of actions (by the city, trustees, and BCH administration) which cut back and limit services offered to the community by Boston City Hospital.

(CPF) - The number of families headed by women is rising at an accelerated rate. A Commerce Department study said recently. The study suggested that the rapid rise is due partly to more women becoming separated or divorced. The study also said female family heads are better educated and more likely to have jobs than previously.

The UMass-Boston Faculty Club began operations last week in College II Faculty Dining Area. Those faculty and professional staff who have not yet participated are cordially invited to do so by the officers and directors Call Thor Olson at Ext. 2195 for details.

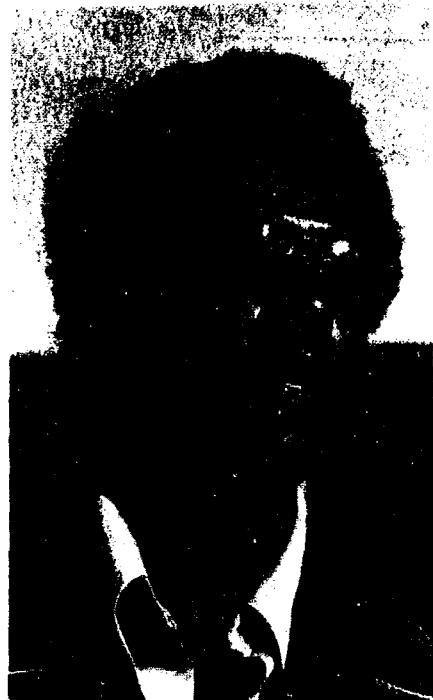
Professor Harold Wolozin (College of Economics Department) has just published *Energy and the Environment* and *The Economics of Pollution*. Both books are published by the General Learning Press. Professor Wolozin is well known for his work and writings in the Political Economy of Environmental Control. He is presently teaching a seminar in this area.

The main library now has a librarian, Samuel Rogers, on duty weekday evenings. He may be reached at Ext. 2206 or 2207.

## Inquiring Photographer

**Huck Hayward**

In the immediate sense, busing is the only way. Integration is important, because different peoples have to learn to deal with each other. But integration in education won't really work until we have integrated neighborhoods. What I don't like about this busing issue is the way the politicians have used it to divert people's attention away from all their other everyday problems.



**Frank Hartel**

I think busing is alright, but it shouldn't start with high school students. By that age, the ideas white people have about blacks are so strong that they're hard to change. The violence in South Boston should stop eventually, but it will take a long time.

**Alan Hunt**

It seems that white people can walk through Roxbury at night safely, but blacks can hardly set foot in South Boston at any time without endangering their lives. As for busing, people have to follow Garrity's order now. But I think an alternative to busing would be establishment of centralized schools where students from all neighborhoods could go, rather than the ethnic, neighborhood schools we have now.



**"What do you think of busing and what is your opinion of the violence in South Boston?"**

by Bran Grant and Mike Mooney



**Wally Thurston**

The government is just using this busing issue to pit the lower classes against each other.



**Jean Dricker**

It's interesting that almost all the violence has been caused by whites, contrary to the myths of how violent black people are. There seems to be much more racism on the part of whites than by blacks. I've also noticed that, whereas the police usually come down hard on blacks, they've been pretty easy on the whites who have started all the trouble.